

Guide to Fetch

Prepared as part of the P3T3 Project at Purdue University

FTP is short for File Transfer Protocol, which is the method used to transfer files from one computer on the Internet to another. You might want to use FTP, for example, for building web pages on one computer (for example, at home) and then transferring them to the web server at work. You can also use it to transfer files to your career account at work and then retrieve those files from your career account at home. Simple FTP file transfers can be made using the web browser Netscape Communicator. For more sophisticated file transfer capabilities, there are many free and shareware products that can be downloaded from web. Fetch is one of them for the Macintosh platform; it is free for educational use. The following sections provide some information about downloading and using Fetch.

Downloading Fetch

Open the Fetch Softworks website either from Netscape Communicator or Internet Explorer by typing the following URL: <http://fetchsoftworks.com/>



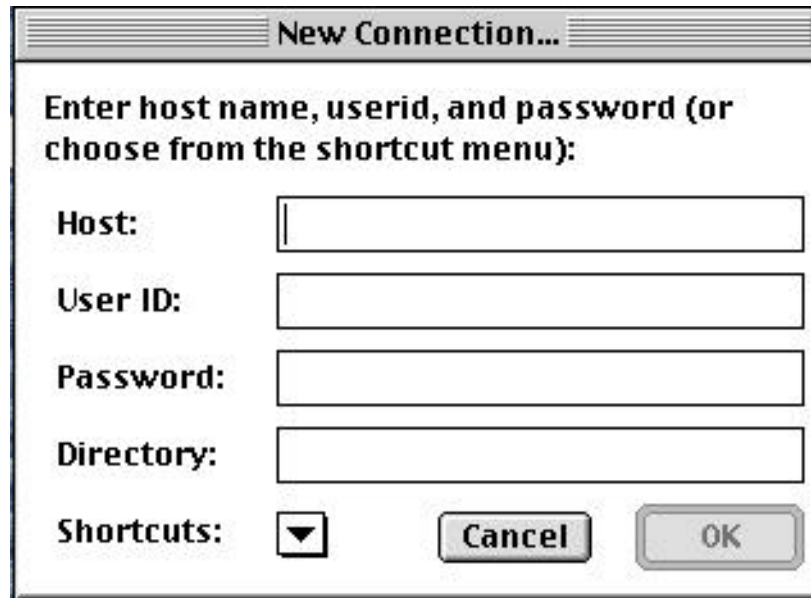
Click the link to download Fetch 3.0.3 to download the free version of Fetch originally developed at Dartmouth University.

After downloading is finished, double-click the “Fetch 3.0.3 Installer” file, and follow the instructions to install Fetch on your computer.

Using Fetch

Connect to a remote computer

Launch Fetch. A window like the following normally appears. (If it does not appear, select New Connection from the File menu).



The image shows a dialog box titled "New Connection...". Inside the dialog, the text reads "Enter host name, userid, and password (or choose from the shortcut menu):". Below this text are five input fields: "Host:", "User ID:", "Password:", "Directory:", and "Shortcuts:". The "Shortcuts:" field has a small downward-pointing arrow next to it. At the bottom right of the dialog, there are two buttons: "Cancel" and "OK".

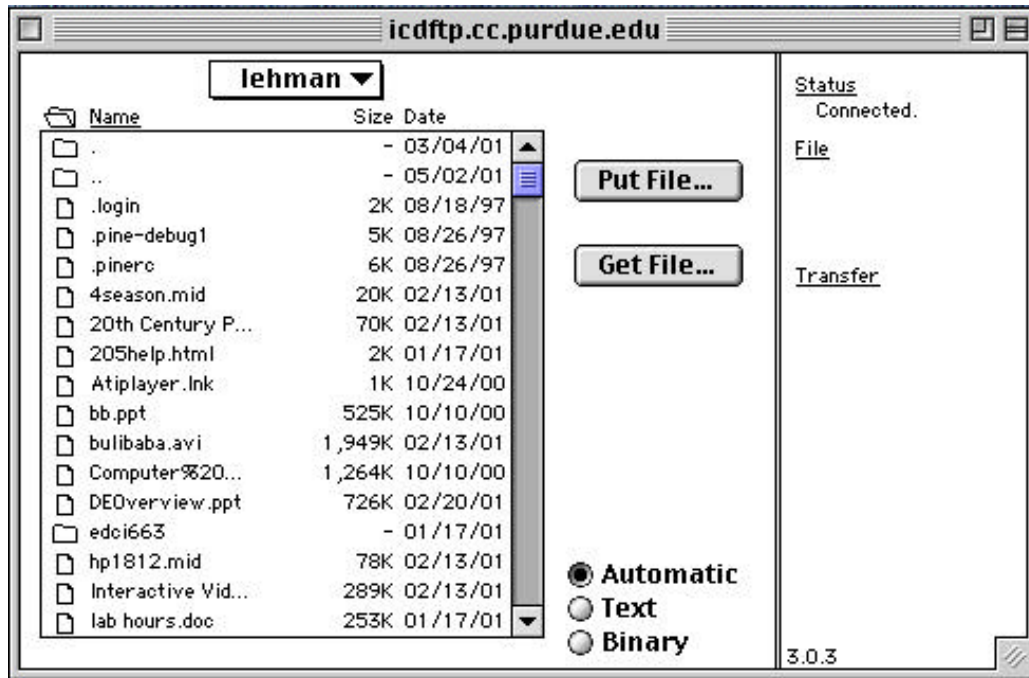
To connect to your web server or any other remote computer, just enter the Host Name/Address, User ID, and Password in the window. These values can be saved as a shortcut so that they do not have to be re-entered each time you start up the program. Let's create a connection to your career account. Enter the following:

Host: **icdftp.cc.purdue.edu**

User ID: *enter your career account login ID*

Password: *enter your career account password*

Click OK, and the program will establish a connection between your local computer and the remote computer. You will see a screen like this.



The window on the left lists all directories and files in your account on the remote computer (here the career account). The two buttons on the right side of the window let you either Put Files (transfer files from your local computer to the remote computer) or Get Files (transfer files from the remote computer to your local computer).

Choose a transfer mode

Three kinds of transfer modes -- Automatic, Text, and Binary -- can be used to transfer files between your computer and the remote computer.

Automatic mode -- files are transferred in Binary mode unless a text type is detected. This mode is generally preferred.

Text mode is used for plain text file, including HTML, transferring.

Binary mode is used for transferring files like executable programs, word processing documents, spreadsheets, databases, graphics files, sound files, and video.

Transfer file(s) from local computer to remote computer

1. Locate the destination on remote computer where you want to place the file. If the destination directory already exists, just open that directory. If no destination directory exists, select Create New Directory from the Directories menu to make one.
2. Click the Put Files button. Locate the file to be transferred on your local computer. Click the Open button in the file dialog box to initiate the transfer.

Transfer file(s) from remote server to local computer

1. Locate the destination directory in local computer and open it.
2. Click the Get Files button. Locate the file to be transferred on the remote computer. Click the Open button in the file dialog box to initiate the transfer.

File management

Fetch provides convenient file management features for the remote computer. As noted above, you can create a new directory on the remote computer. Also, once you select a file or a folder on the remote computer, you can **view**, **rename**, or **delete** a file or a folder by using the Remote menu.

Ending a Session

To end an FTP session, select **Close** from the File menu. You can select New Connection to initiate another connection. Choose **Quit** from the File menu to close the program.